

# Retail Spaces for Lease

Kent Plaza

2719 S 6th Street, Springfield, IL



## Available Approx SF:

Unit 2745	+/- 1,600 SF	\$11.00/SF + NNN (+/- \$3.00/SF)
Unit 2759	+/- 2,200 SF	\$11.00/SF + NNN (+/- \$3.00/SF)
Unit 2763	+/- 1,100 SF	\$14.05/SF + NNN (+/- \$3.00/SF)
Units 2767-2769	+/- 4,080 SF	\$12.00/SF + NNN (+/- \$3.00/SF)

**Zoning:** B-1

(City of Springfield)

**ADT:** 26,700 (6th St.)

## Two New Anchor Tenants: O'Reilly Auto-Parts & Ollie's Discount Store!

Kent Plaza has long been recognized as a commercial hub in the central-south portion of Springfield, IL. Your business can take advantage of this excellent location, with various layouts available. The site is well positioned between the north-south Business I-55/S 6th Street corridor and Stanford Ave, providing east-west access. 20,000 vehicles per day pass the site on 6th St., which has a stoplight and rear access to 4th street for easy access. The plaza offers a well balanced mix of retail, restaurant, financial and service businesses. 6th Street also goes directly into downtown Springfield's central business district and tourism sites.

The information found in this brochure is for informational purposes only, and is not audited, warranted or in any fashion guaranteed by **Todd P Smith Real Estate, Inc.** It is subject to verification by any interested parties and no liability for errors or omissions is assumed.

**NOTICE OF AGENCY:** **Todd P Smith Real Estate, Inc.** is the exclusive agent for the seller/lessor and therefore represents the seller/lessor, unless expressed otherwise in writing with the parties to a transaction.

**Contact:** Todd P Smith  
**Phone:** 217.441.8000  
**Email:** todd@tpsmithre.com  
**Website:** www.TPSmithRE.com



**TODD P. SMITH**  
COMMERCIAL REAL ESTATE

Todd P Smith, Designated Managing Bro-

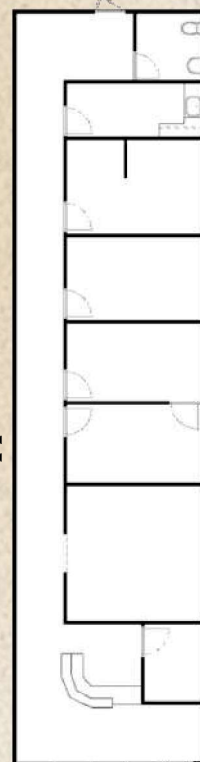
# Retail Spaces for Lease

Kent Plaza

2719 S 6th Street, Springfield, IL



## Unit 2745



Approx. 80'

Approx. 20'

<u>Available Space</u>	<u>Leasable SF</u>	<u>Rental Rate</u>
2745 S 6th St.	+/- 1,600 SF	\$11.00/SF + NNN

The information found in this brochure is for informational purposes only, and is not audited, warranted or in any fashion guaranteed by **Todd P Smith Real Estate, Inc.** It is subject to verification by any interested parties and no liability for errors or omissions is assumed.  
**NOTICE OF AGENCY:** Todd P Smith Real Estate, Inc. is the exclusive agent for the seller/lessor and therefore represents the seller/lessor, unless expressed otherwise in writing with the parties to a transaction.

**Contact:** Todd P Smith  
**Phone:** 217.441.8000  
**Email:** todd@tpsmithre.com  
**Website:** www.TPSmithRE.com



**TODD P. SMITH**  
COMMERCIAL REAL ESTATE

Todd P Smith, Designated Managing Broker

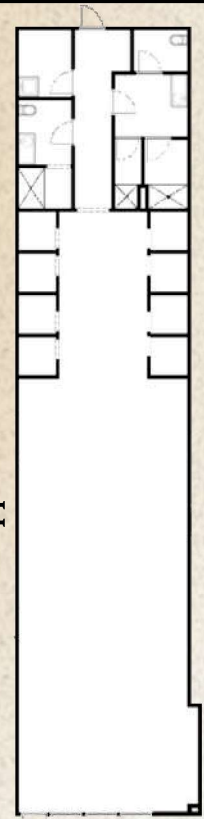
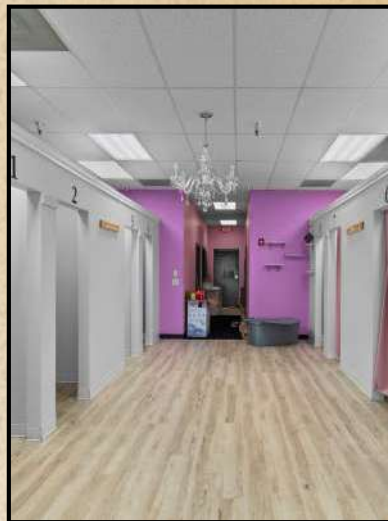
# Retail Spaces for Lease

Kent Plaza

2719 S 6th Street, Springfield, IL



## Unit 2759



Approx. 100'

Approx. 22'

<u>Available Space</u>	<u>Leasable SF</u>	<u>Rental Rate</u>
2759 S 6th St.	+/- 2,200 SF	\$11.00/SF + NNN

The information found in this brochure is for informational purposes only, and is not audited, warranted or in any fashion guaranteed by **Todd P Smith Real Estate, Inc.** It is subject to verification by any interested parties and no liability for errors or omissions is assumed.  
**NOTICE OF AGENCY:** Todd P Smith Real Estate, Inc. is the exclusive agent for the seller/lessor and therefore represents the seller/lessor, unless expressed otherwise in writing with the parties to a transaction.

**Contact:** Todd P Smith  
**Phone:** 217.441.8000  
**Email:** todd@tpsmithre.com  
**Website:** www.TPSmithRE.com



**TODD P. SMITH**  
COMMERCIAL REAL ESTATE

Todd P Smith, Designated Managing Broker

# Retail Spaces for Lease

Kent Plaza

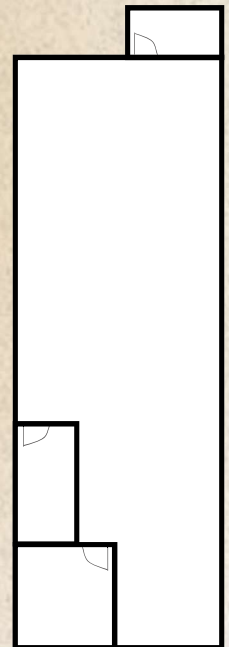
2719 S 6th Street, Springfield, IL



## Unit 2763



Approx. 44'



Approx. 22'

Floorplan not to scale

<u>Available Space</u>	<u>Leasable SF</u>	<u>Rental Rate</u>
2763 S 6th St.	+/- 1,068 SF	\$14.05/SF + NNN

The information found in this brochure is for informational purposes only, and is not audited, warranted or in any fashion guaranteed by **Todd P Smith Real Estate, Inc.** It is subject to verification by any interested parties and no liability for errors or omissions is assumed.  
**NOTICE OF AGENCY:** Todd P Smith Real Estate, Inc. is the exclusive agent for the seller/lessor and therefore represents the seller/lessor, unless expressed otherwise in writing with the parties to a transaction.

**Contact:** Todd P Smith  
**Phone:** 217.441.8000  
**Email:** todd@tpsmithre.com  
**Website:** www.TPSmithRE.com



**TODD P. SMITH**  
COMMERCIAL REAL ESTATE

Todd P Smith, Designated Managing Broker

# Retail Spaces for Lease

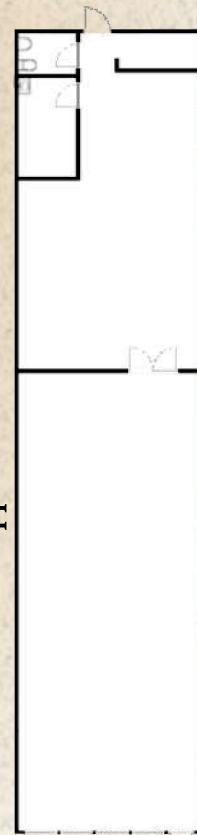
Kent Plaza

2719 S 6th Street, Springfield, IL



## Unit 2767

Can be combined  
with Unit 2769



### Available Space

2767 S 6th St.

### Leasable SF

+/- 2,200 SF

### Rental Rate

\$12.00/SF + NNN

The information found in this brochure is for informational purposes only, and is not audited, warranted or in any fashion guaranteed by **Todd P Smith Real Estate, Inc.** It is subject to verification by any interested parties and no liability for errors or omissions is assumed.

**NOTICE OF AGENCY:** Todd P Smith Real Estate, Inc. is the exclusive agent for the seller/lessor and therefore represents the seller/lessor, unless expressed otherwise in writing with the parties to a transaction.

Approx. 22'

Contact:

Todd P Smith

Phone:

217.441.8000

Email:

todd@tpsmithre.com

Website:

www.TPSmithRE.com



**TODD P. SMITH**  
COMMERCIAL REAL ESTATE

Todd P Smith, Designated Managing Broker

# Retail Spaces for Lease

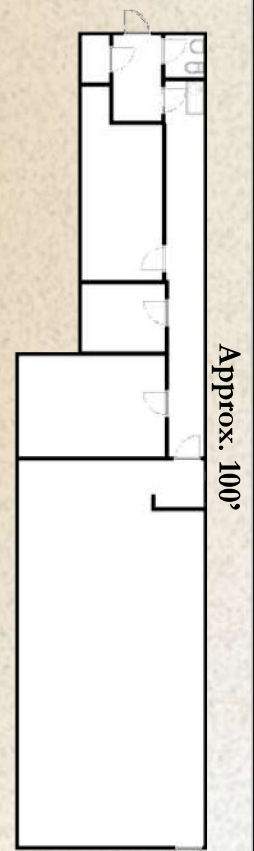
Kent Plaza

2719 S 6th Street, Springfield, IL



## Unit 2769

Can be combined  
with Unit 2767



Approx. 100'

Approx. 22'

### Available Space

2769 S 6th St.

### Leasable SF

+/- 1,880 SF

### Rental Rate

\$12.00/SF + NNN

The information found in this brochure is for informational purposes only, and is not audited, warranted or in any fashion guaranteed by **Todd P Smith Real Estate, Inc.** It is subject to verification by any interested parties and no liability for errors or omissions is assumed.  
**NOTICE OF AGENCY:** Todd P Smith Real Estate, Inc. is the exclusive agent for the seller/lessor and therefore represents the seller/lessor, unless expressed otherwise in writing with the parties to a transaction.

Contact:

Todd P Smith

Phone:

217.441.8000

Email:

todd@tpsmithre.com

Website:

www.TPSmithRE.com



**TODD P. SMITH**  
COMMERCIAL REAL ESTATE

Todd P Smith, Designated Managing Broker