

LAND FOR SALE

2200 East Enterprise, Springfield, IL



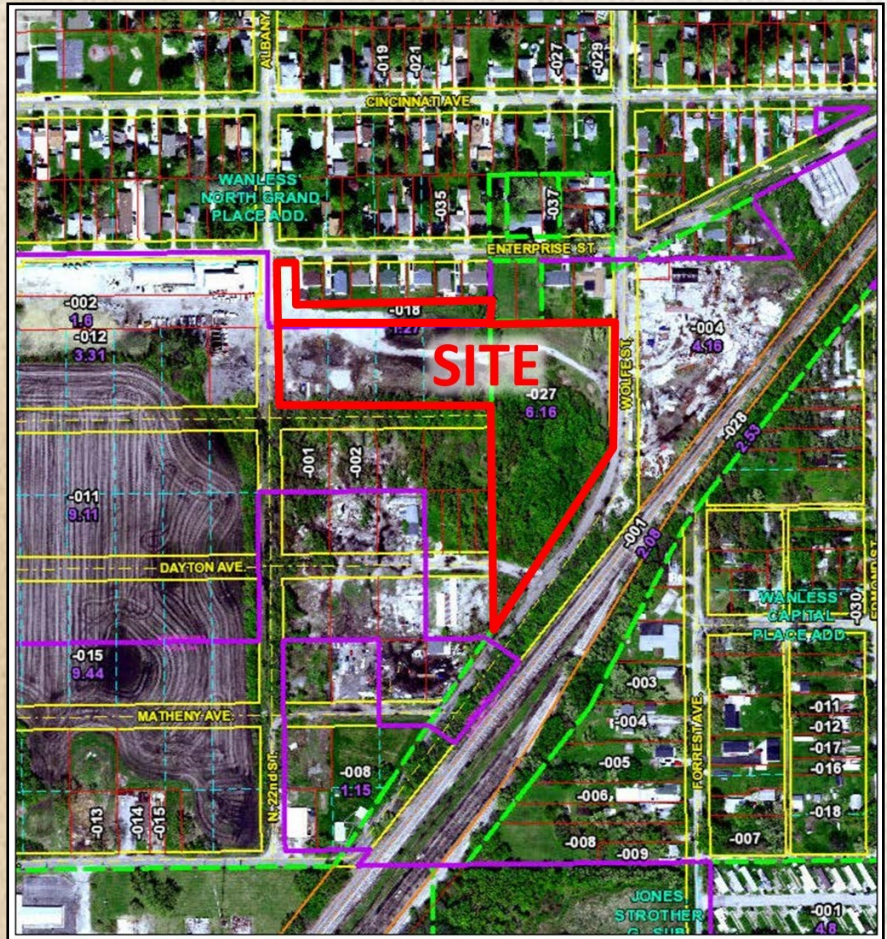
Property Type: Development Site, Land

Price: \$146,600

Zoning: Lot 027 = I-2(Sangamon County)
Lot 018 = Residential (Village of Grandview)

Lot Size: +/- 7.43 Acres

Parcel(s): 14-26.0-252-018
14-26.0-252-027



A Rare Find!

+/- 7.43 acres of development land just south of North Grand Avenue. Property has 40' of frontage on Enterprise, then widens to the east with the southeast portion having timber.

The information found in this brochure is for informational purposes only, and is not audited, warranted or in any fashion guaranteed by **Todd P Smith Real Estate, Inc.** It is subject to verification by any interested parties and no liability for errors or omissions is assumed.

NOTICE OF AGENCY: Todd P Smith Real Estate, Inc. is the exclusive agent for the seller/lessor and therefore represents the seller/lessor, unless expressed otherwise in writing with the parties to a transaction.

Contact: Todd P Smith
Phone: 217.441.8000
Email: todd@tpsmithre.com
Website: www.TPSmithRE.com



TODD P. SMITH
COMMERCIAL REAL ESTATE

Todd P Smith, Designated Managing Broker